

R-KEM II with Threaded Rods for Concrete

Universal polyester (styrene free) resin - European Approval for 15 substrates



Approvals and Reports

- ETA-12/0394



Product information

Features and benefits

- The most convenient bonded anchor for general purpose use
- Quick, secure and simple installation
- Product with wide spectrum of use in the medium load capacity area
- Ideal for applications where mechanical anchors are not suitable
- Easy dosage thanks to patented self-opening system and use of manual or pneumatic gun
- Option of use standard manual silicone gun
- Suitable for multiple use. Partly used product can be reused after fitting new nozzle

Applications

- Consoles
- Staircases
- Gates
- High racking
- Canopies
- Sanitary appliances
- Steel constructions
- Railings
- Handrails
- Ladders
- Cable trays

Base materials

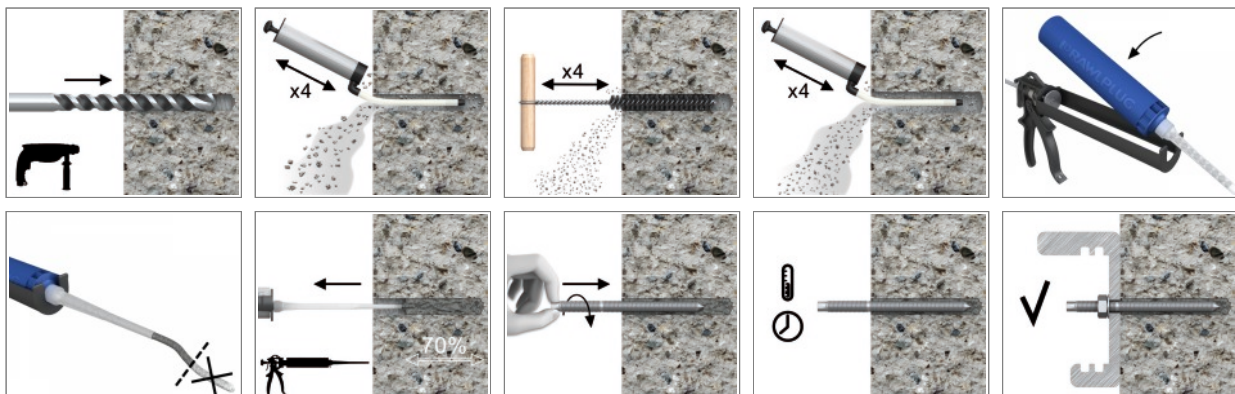
Approved for use in:

- Non-cracked concrete C20/25-C50/60

Also suitable for use in:

- Natural Stone (after site testing)

Installation guide



Product information

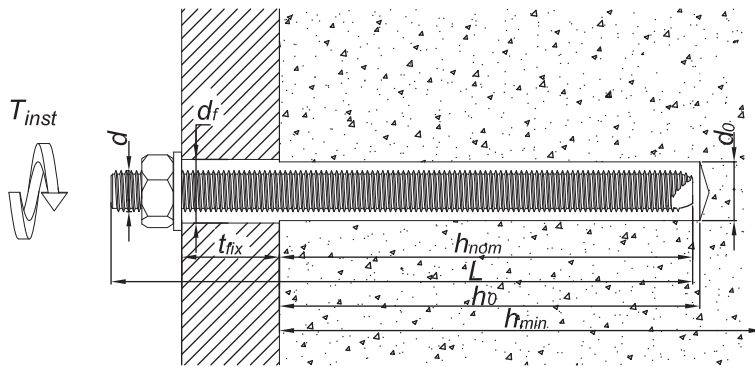
1. Drill hole to the required diameter and depth for stud size being used.
2. Solid substrates: clean the drill hole thoroughly with brush and hand pump at least four times before installation.
3. Insert cartridge into gun and attach nozzle.
4. Dispense to waste until even colour is obtained.
5. Insert the mixer nozzle to the bottom of the drill hole and inject resin, slowly withdrawing the nozzle as the hole is filled to 70% of its depth.
6. Immediately insert the stud, slowly and with slight twisting motion. Remove any excess resin around the hole before it sets and leave it undisturbed until the curing time elapses.
7. Attach fixture and tighten the nut to the required torque.

Product Code	Resin	Description / Resin Type	Volume
			[ml]
R-KEM-II-175	R-KEMII	Styrene Free Polyester Resin	175
R-KEM-II-300			300
R-KEM-II-380			380
R-KEM-II-410			410
R-KEM-II-175-W	R-KEMII-W	Low Temperature (Winter) / Rapid Cure Styrene Free Polyester Resin	175
R-KEM-II-300-W			300
R-KEM-II-175-S	R-KEMII-S	High Temperature (Summer) / Slow Cure Styrene Free Polyester Resin	175
R-KEM-II-300-S			300
R-KEM-II-175-SET	R-KEMII	Set with 4 studs and plastic sleeves	175
R-KEM-II-300-SET			300
R-KEM-II-300-STONE		Stone colour Styrene Free Polyester Resin	410
R-KEM-II-410-STONE			410
R-KEM-II-300-GREY		Grey colour Styrene Free Polyester Resin	300
R-KEM-II-410-GREY			410

R-STUDS

Size	Product Code			Anchor		Fixture
	Steel class 5.8	Steel class 8.8	Steel grade A4	Diameter	Length	Hole diameter
				d	L	d _f
				[mm]	[mm]	[mm]
M8	R-STUDS-08110	R-STUDS-08110-88	R-STUDS-08110-A4	8	110	9
	R-STUDS-08160	-	R-STUDS-08160-A4	8	160	9
M10	R-STUDS-10130	R-STUDS-10130-88	R-STUDS-10130-A4	10	130	12
	R-STUDS-10170	-	R-STUDS-10170-A4	10	170	12
	R-STUDS-10190	-	R-STUDS-10190-A4	10	190	12
M12	R-STUDS-12160	R-STUDS-12160-88	R-STUDS-12160-A4	12	160	14
	R-STUDS-12190	-	R-STUDS-12190-A4	12	190	14
	R-STUDS-12220	-	R-STUDS-12220-A4	12	220	14
	R-STUDS-12260	-	R-STUDS-12260-A4	12	260	14
	R-STUDS-12300	-	R-STUDS-12300-A4	12	300	14
M16	R-STUDS-16190	R-STUDS-16190-88	R-STUDS-16190-A4	16	190	18
	R-STUDS-16220	-	R-STUDS-16220-A4	16	220	18
	R-STUDS-16260	-	R-STUDS-16260-A4	16	260	18
	R-STUDS-16300	-	R-STUDS-16300-A4	16	300	18
	R-STUDS-16380	-	R-STUDS-16380-A4	16	380	18
M20	R-STUDS-20260	R-STUDS-20260-88	R-STUDS-20260-A4	20	260	22
	R-STUDS-20300	-	R-STUDS-20300-A4	20	300	22
	R-STUDS-20350	-	R-STUDS-20350-A4	20	350	22
M24	R-STUDS-24300	R-STUDS-24300-88	R-STUDS-24300-A4	24	300	26
M30	R-STUDS-30380	R-STUDS-30380-88	R-STUDS-30380-A4	30	380	32

Installation data



R-STUDS

Size	M8	M10	M12	M16	M20	M24	M30		
Thread diameter	d	[mm]	8	10	12	16	20	24	30
Hole diameter in substrate	d ₀	[mm]	10	12	14	18	24	28	35
Hole diameter in fixture	d _f	[mm]	9	12	14	18	22	26	32
Min. hole depth in substrate	h ₀	[mm]	h _{nom} + 5	h _{nom} + 5	h _{nom} + 5	h _{nom} + 5	h _{nom} + 5	h _{nom} + 5	h _{nom} + 5
Min. substrate thickness	h _{min}	[mm]	h _{nom} + 2d ₀	h _{nom} + 2d ₀	h _{nom} + 2d ₀	h _{nom} + 2d ₀	h _{nom} + 2d ₀	h _{nom} + 2d ₀	h _{nom} + 2d ₀
Installation torque	T _{inst}	[Nm]	10	20	40	80	120	180	300
Min. spacing	s _{min}	[mm]	0.5 * h _{nom} ≥ 40	0.5 * h _{nom} ≥ 40	0.5 * h _{nom} ≥ 40	0.5 * h _{nom} ≥ 40	0.5 * h _{nom} ≥ 40	0.5 * h _{nom} ≥ 40	0.5 * h _{nom} ≥ 40
Min. edge distance	c _{min}	[mm]	0.5 * h _{nom} ≥ 40	0.5 * h _{nom} ≥ 40	0.5 * h _{nom} ≥ 40	0.5 * h _{nom} ≥ 40	0.5 * h _{nom} ≥ 40	0.5 * h _{nom} ≥ 40	0.5 * h _{nom} ≥ 40
MINIMUM EMBEDMENT DEPTH									
Min. installation depth	h _{nom,min}	[mm]	60	70	80	100	120	140	165
MAXIMUM EMBEDMENT DEPTH									
Min. installation depth	h _{nom,max}	[mm]	100	120	145	190	240	290	360

Minimum working and curing time

R-KEM II

Resin temperature	Concrete temperature	Curing time*	Working time
[°C]	[°C]	[min]	[min]
5	-20	-	-
5	-15	-	-
5	-10	-	-
5	-5	8 h	70
5	0	4 h	45
5	5	2 h	25
10	10	1.5 h	15
15	15	1 h	9
20	20	45	5
25	30	30	2
25	35	-	-
25	40	-	-

*For wet concrete the curing time must be doubled

Installation data

R-KEMII-W

Resin temperature	Concrete temperature	Curing time*	Working time
[°C]	[°C]	[min]	[min]
5	-20	24 h	45
5	-15	18 h	30
5	-10	8 h	20
5	-5	5 h	11
5	0	2 h	7
5	5	1 h	5
10	10	45	2
15	15	30	1.5
20	20	15	1
25	30	-	-
25	35	-	-
25	40	-	-

*For wet concrete the curing time must be doubled

R-KEMII-S

Resin temperature	Concrete temperature	Curing time*	Working time
[°C]	[°C]	[min]	[min]
5	-20	-	-
5	-15	-	-
5	-10	-	-
5	-5	24 h	180
5	0	18 h	120
5	5	12 h	60
10	10	8 h	45
15	15	6 h	25
20	20	4 h	15
25	30	1.5 h	7
25	35	1 h	6
25	40	45	5

*For wet concrete the curing time must be doubled

Mechanical properties

Size			M8	M10	M12	M16	M20	M24	M30
R-STUDS Metric Threaded Rods - Steel Class 5.8									
Nominal ultimate tensile strength - tension	f_{uk}	[N/mm ²]	500	500	500	500	500	500	500
Nominal yield strength - tension	f_{yk}	[N/mm ²]	400	400	400	400	400	400	400
Cross sectional area - tension	A_s	[mm ²]	37	58	84	157	245	353	560
Elastic section modulus	W_{el}	[mm ³]	31	62	109	278	541	935	1868
Characteristic bending resistance	$M^0_{Rk,s}$	[Nm]	19	37	65	166	324	561	1124
Design bending resistance	M	[Nm]	15	30	52	133	259	449	899
Allowable bending resistance	M_{rec}	[Nm]	11	21	37	95	185	321	642

Mechanical properties

Size			M8	M10	M12	M16	M20	M24	M30
R-STUDS Metric Threaded Rods - Steel Class 8.8									
Nominal ultimate tensile strength - tension	f_{uk}	[N/mm ²]	800	800	800	800	800	800	800
Nominal yield strength - tension	f_{yk}	[N/mm ²]	640	640	640	640	640	640	640
Cross sectional area - tension	A_s	[mm ²]	37	58	84	157	245	353	560
Elastic section modulus	W_{el}	[mm ³]	31	62	109	278	541	935	1868
Characteristic bending resistance	$M_{Rk,s}^0$	[Nm]	30	60	105	266	519	898	1799
Design bending resistance	M	[Nm]	24	48	84	213	416	718	1439
Allowable bending resistance	M_{rec}	[Nm]	17	34	60	152	297	513	1028
R-STUDS Metric Threaded Rods - A4									
Nominal ultimate tensile strength - tension	f_{uk}	[N/mm ²]	700	700	700	700	700	700	700
Nominal yield strength - tension	f_{yk}	[N/mm ²]	450	450	450	450	450	450	450
Cross sectional area - tension	A_s	[mm ²]	37	58	84	157	245	353	560
Elastic section modulus	W_{el}	[mm ³]	31	62	109	278	541	935	1868
Characteristic bending resistance	$M_{Rk,s}^0$	[Nm]	26	52	92	233	454	786	1574
Design bending resistance	M	[Nm]	17	34	59	149	291	504	1009
Allowable bending resistance	M_{rec}	[Nm]	12	24	42	107	208	360	721

Basic performance data

R-STUDS

Performance data for single anchor without influence of edge distance and spacing - ETAG 001

Size		M8	M10	M12	M16	M20	M24	M30
Substrate		Non-cracked concrete						
MEAN ULTIMATE LOAD								
TENSION LOAD $N_{Ru,m}$								
R-STUDS METRIC THREADED RODS - STEEL CLASS 5.8								
Minimum embedment depth	[kN]	18.9	30.5	40.7	63.4	88.7	111.8	143.1
Maximum embedment depth	[kN]	18.9	30.5	44.1	81.9	128.1	184.8	294.0
R-STUDS METRIC THREADED RODS - STEEL CLASS 8.8								
Minimum embedment depth	[kN]	21.1	30.8	40.7	65.4	88.7	111.8	143.1
Maximum embedment depth	[kN]	30.5	48.3	70.4	124.2	196.0	251.5	339.3
R-STUDS METRIC THREADED RODS - A4								
Minimum embedment depth	[kN]	21.1	30.8	40.7	65.4	88.7	111.8	143.1
Maximum embedment depth	[kN]	27.3	43.1	62.0	115.5	179.6	251.5	339.3
SHEAR LOAD $V_{Ru,m}$								
R-STUDS METRIC THREADED RODS - STEEL CLASS 5.8								
Minimum embedment depth	[kN]	11.3	18.3	26.5	49.1	76.9	110.9	176.4
Maximum embedment depth	[kN]	11.3	18.3	26.5	49.1	76.9	110.9	176.4
R-STUDS METRIC THREADED RODS - STEEL CLASS 8.8								
Minimum embedment depth	[kN]	18.3	29.0	42.2	79.4	123.5	177.7	282.9
Maximum embedment depth	[kN]	18.3	29.0	42.2	79.4	123.5	177.7	282.9
R-STUDS METRIC THREADED RODS - A4								
Minimum embedment depth	[kN]	16.4	25.8	37.2	69.3	107.7	155.6	247.6
Maximum embedment depth	[kN]	16.4	25.8	37.2	69.3	107.7	155.6	247.6

Basic performance data

Size		M8	M10	M12	M16	M20	M24	M30
CHARACTERISTIC LOAD								
TENSION LOAD N_{Rk}								
R-STUDS METRIC THREADED RODS - STEEL CLASS 5.8								
Minimum embedment depth	[kN]	14.3	20.9	27.1	40.2	60.3	68.6	85.5
Maximum embedment depth	[kN]	18.0	29.0	42.0	76.4	120.6	142.1	186.6
R-STUDS METRIC THREADED RODS - STEEL CLASS 8.8								
Minimum embedment depth	[kN]	14.3	20.9	27.1	40.2	60.3	68.6	85.5
Maximum embedment depth	[kN]	23.9	35.8	49.2	76.4	120.6	142.1	186.6
R-STUDS METRIC THREADED RODS - A4								
Minimum embedment depth	[kN]	14.3	20.9	27.1	40.2	60.3	68.6	85.5
Maximum embedment depth	[kN]	23.9	35.8	49.2	76.4	120.6	142.1	186.6
SHEAR LOAD V_{Rk}								
R-STUDS METRIC THREADED RODS - STEEL CLASS 5.8								
Minimum embedment depth	[kN]	9.00	14.0	21.0	39.0	61.0	88.0	140.0
Maximum embedment depth	[kN]	9.00	14.0	21.0	39.0	61.0	88.0	140.0
R-STUDS METRIC THREADED RODS - STEEL CLASS 8.8								
Minimum embedment depth	[kN]	15.0	23.0	34.0	63.0	98.0	137.2	171.1
Maximum embedment depth	[kN]	15.0	23.0	34.0	63.0	98.0	141.0	224.0
R-STUDS METRIC THREADED RODS - A4								
Minimum embedment depth	[kN]	13.0	20.0	29.0	55.0	86.0	124.0	171.1
Maximum embedment depth	[kN]	13.0	20.0	29.0	55.0	86.0	124.0	196.0
DESIGN LOAD								
TENSION LOAD N_{Rd}								
R-STUDS METRIC THREADED RODS - STEEL CLASS 5.8								
Minimum embedment depth	[kN]	6.82	11.6	15.1	22.3	33.5	38.1	47.5
Maximum embedment depth	[kN]	11.4	19.3	27.3	42.5	67.0	79.0	103.7
R-STUDS METRIC THREADED RODS - STEEL CLASS 8.8								
Minimum embedment depth	[kN]	6.82	11.6	15.1	22.3	33.5	38.1	47.5
Maximum embedment depth	[kN]	11.4	19.9	27.3	42.5	67.0	79.0	103.7
R-STUDS METRIC THREADED RODS - A4								
Minimum embedment depth	[kN]	6.82	11.6	15.1	22.3	33.5	38.1	47.5
Maximum embedment depth	[kN]	11.4	19.9	27.3	42.5	67.0	79.0	103.7
SHEAR LOAD V_{Rd}								
R-STUDS METRIC THREADED RODS - STEEL CLASS 5.8								
Minimum embedment depth	[kN]	7.20	11.2	16.8	31.2	48.8	70.4	112.0
Maximum embedment depth	[kN]	7.20	11.2	16.8	31.2	48.8	70.4	112.0
R-STUDS METRIC THREADED RODS - STEEL CLASS 8.8								
Minimum embedment depth	[kN]	12.0	18.4	27.2	50.4	78.4	91.5	114.0
Maximum embedment depth	[kN]	12.0	18.4	27.2	50.4	78.4	112.8	179.2
R-STUDS METRIC THREADED RODS - A4								
Minimum embedment depth	[kN]	8.33	12.8	18.6	35.3	55.1	79.5	114.0
Maximum embedment depth	[kN]	8.33	12.8	18.6	35.3	55.1	79.5	125.6

Basic performance data

Size		M8	M10	M12	M16	M20	M24	M30
RECOMMENDED LOAD								
TENSION LOAD N_{rec}								
R-STUDS METRIC THREADED RODS - STEEL CLASS 5.8								
Minimum embedment depth	[kN]	4.87	8.29	10.8	16.0	23.9	27.2	33.9
Maximum embedment depth	[kN]	8.12	13.8	19.5	30.3	47.9	56.4	74.1
R-STUDS METRIC THREADED RODS - STEEL CLASS 8.8								
Minimum embedment depth	[kN]	4.87	8.29	10.8	16.0	23.9	27.2	33.9
Maximum embedment depth	[kN]	8.12	14.2	19.5	30.3	47.9	56.4	74.1
R-STUDS METRIC THREADED RODS - A4								
Minimum embedment depth	[kN]	4.87	8.29	10.8	16.0	23.9	27.2	33.9
Maximum embedment depth	[kN]	8.12	14.2	19.5	30.3	47.9	56.4	74.1
SHEAR LOAD V_{rec}								
R-STUDS METRIC THREADED RODS - STEEL CLASS 5.8								
Minimum embedment depth	[kN]	5.14	8.00	12.0	22.3	34.9	50.3	80.0
Maximum embedment depth	[kN]	5.14	8.00	12.0	22.3	34.9	50.3	80.0
R-STUDS METRIC THREADED RODS - STEEL CLASS 8.8								
Minimum embedment depth	[kN]	8.57	13.1	19.4	36.0	56.0	65.4	81.5
Maximum embedment depth	[kN]	8.57	13.1	19.4	36.0	56.0	80.6	128.0
R-STUDS METRIC THREADED RODS - A4								
Minimum embedment depth	[kN]	5.95	9.16	13.3	25.2	39.4	56.8	81.5
Maximum embedment depth	[kN]	5.95	9.16	13.3	25.2	39.4	56.8	89.7

Design performance data

R-STUDS

Size		M8	M10	M12	M16	M20	M24	M30
TENSION LOAD								
STEEL FAILURE; STEEL CLASS 5.8								
Characteristic resistance	$N_{Rk,s}$ [kN]	18.00	29.00	42.00	78.00	122.00	176.00	280.00
Partial safety factor	γ_{Ms}	1.50	1.50	1.50	1.50	1.50	1.50	1.50
STEEL FAILURE; STEEL CLASS 8.8								
Characteristic resistance	$N_{Rk,s}$ [kN]	29.00	46.00	67.00	126.00	196.00	282.00	448.00
Partial safety factor	γ_{Ms}	1.50	1.50	1.50	1.50	1.50	1.50	1.50
STEEL FAILURE; STEEL GRADE A4-70								
Characteristic resistance	$N_{Rk,s}$ [kN]	26.00	41.00	59.00	110.00	171.00	247.00	392.00
Partial safety factor	γ_{Ms}	1.87	1.87	1.87	1.87	1.87	1.87	1.87
COMBINED PULL-OUT AND CONCRETE CONE FAILURE; NON-CRACKED CONCRETE, C20/25 (40°C/24°C)								
Characteristic bond resistance	T_{Rk} [N/mm ²]	9.50	9.50	9.00	8.00	8.00	6.50	5.50
COMBINED PULL-OUT AND CONCRETE CONE FAILURE; NON-CRACKED CONCRETE, C20/25 (80°C/50°C)								
Characteristic bond resistance	T_{Rk} [N/mm ²]	8.00	8.00	7.50	7.00	6.50	5.00	4.50
COMBINED PULL-OUT AND CONCRETE CONE FAILURE								
Installation safety factor	γ_2	1.40	1.20	1.20	1.20	1.20	1.20	1.20
Increasing factors for $N_{Rd,p}$ - C30/37	ψ_c	1.04	1.04	1.04	1.04	1.00	1.00	1.00
Increasing factors for $N_{Rd,p}$ - C40/50	ψ_c	1.07	1.07	1.07	1.07	1.00	1.00	1.00
Increasing factors for $N_{Rd,p}$ - C50/60	ψ_c	1.09	1.09	1.09	1.09	1.00	1.00	1.00
CONCRETE CONE FAILURE								
Installation safety factor	γ_2	1.40	1.20	1.20	1.20	1.20	1.20	1.20
Factor for non-cracked concrete	k	10.10	10.10	10.10	10.10	10.10	10.10	10.10
Factor for non-cracked concrete	$k_{ucr,N}$	11.00	11.00	11.00	11.00	11.00	11.00	11.00
Edge distance	$c_{gr,N}$ [mm]	$1.5 \cdot h_{ef}$	$1.5 \cdot h_{ef}$	$1.5 \cdot h_{ef}$	$1.5 \cdot h_{ef}$	$1.5 \cdot h_{ef}$	$1.5 \cdot h_{ef}$	$1.5 \cdot h_{ef}$
Spacing	$s_{gr,N}$ [mm]	$3.0 \cdot h_{ef}$	$3.0 \cdot h_{ef}$	$3.0 \cdot h_{ef}$	$3.0 \cdot h_{ef}$	$3.0 \cdot h_{ef}$	$3.0 \cdot h_{ef}$	$3.0 \cdot h_{ef}$
CONCRETE SPLITTING FAILURE								
Installation safety factor	γ_2	1.40	1.20	1.20	1.20	1.20	1.20	1.20

Design performance data

Size			M8	M10	M12	M16	M20	M24	M30
STEEL FAILURE; STEEL CLASS 5.8									
Characteristic resistance without lever arm	$V_{Rk,s}$	[kN]	9.00	14.00	21.00	39.00	61.00	88.00	140.00
Ductility factor	k_7	-	0.80	0.80	0.80	0.80	0.80	0.80	0.80
Characteristic resistance with lever arm	$M_{Rk,s}$	[Nm]	19.00	37.00	65.00	166.00	324.00	561.00	1124.00
Partial safety factor	γ_{Ms}	-	1.25	1.25	1.25	1.25	1.25	1.25	1.25
STEEL FAILURE; STEEL CLASS 8.8									
Characteristic resistance without lever arm	$V_{Rk,s}$	[kN]	15.00	23.00	34.00	63.00	98.00	141.00	224.00
Ductility factor	k_7	-	0.80	0.80	0.80	0.80	0.80	0.80	0.80
Characteristic resistance with lever arm	$M_{Rk,s}$	[Nm]	30.00	60.00	105.00	266.00	519.00	898.00	1799.00
Partial safety factor	γ_{Ms}	-	1.25	1.25	1.25	1.25	1.25	1.25	1.25
STEEL FAILURE; STEEL GRADE A4-70									
Characteristic resistance without lever arm	$V_{Rk,s}$	[kN]	13.00	20.00	29.00	55.00	86.00	124.00	196.00
Ductility factor	k_7	-	0.80	0.80	0.80	0.80	0.80	0.80	0.80
Characteristic resistance with lever arm	$M_{Rk,s}$	[Nm]	26.00	52.00	92.00	233.00	454.00	786.00	1574.00
Partial safety factor	γ_{Ms}	-	1.56	1.56	1.56	1.56	1.56	1.56	1.56
CONCRETE PRY-OUT FAILURE									
Factor	k	-	2.00	2.00	2.00	2.00	2.00	2.00	2.00
Installation safety factor	γ_2	-	1.00	1.00	1.00	1.00	1.00	1.00	1.00
CONCRETE EDGE FAILURE									
Anchor diameter	d_{nom}	[mm]	8.00	10.00	12.00	16.00	20.00	24.00	30.00
Effective length of anchor	ℓ_f	[mm]	min ($h_{ef}; 8d_{nom}$)	min ($h_{ef}; 8d_{nom}$)	min ($h_{ef}; 8d_{nom}$)	min ($h_{ef}; 8d_{nom}$)	min ($h_{ef}; 8d_{nom}$)	min ($h_{ef}; 8d_{nom}$)	min ($h_{ef}; 8d_{nom}$)
Installation safety factor	γ_2	-	1.00	1.00	1.00	1.00	1.00	1.00	1.00

Combined pull-out and concrete cone failure (TR 029, p.5.2.2.3. acc. to formula 5.2a - $N_{Rk,p}^0 = n \cdot d \cdot h_{ef} \cdot \tau_{Rk}$).

Concrete cone failure (TR 029, p.5.2.2.4. acc. to formula 5.3a - $N_{Rk,c}^0 = k_1 \cdot f_{ck,cube}^{0.5} \cdot h_{ef}^{1.5}$).

$h_{ef} = h_{nom}$

Product commercial data

Product Code	Volume [ml]	Quantity [pcs]			Weight [kg]			Bar Codes
		Box	Outer	Pallet	Box	Outer	Pallet	
R-KEM-II-175 ¹⁾	175	10	50	600	3.8	18.9	257.2	5906675050249
R-KEM-II-300 ¹⁾	300	10	10	840	5.9	5.9	529.0	5906675050256
R-KEM-II-380 ¹⁾	380	10	10	560	8.2	8.2	486.3	5906675097770
R-KEM-II-410 ¹⁾	410	10	10	560	8.4	8.4	498.7	5906675408163
R-KEM-II-175-W ¹⁾	175	10	50	600	3.8	19.2	260.6	5906675064659
R-KEM-II-300-W ¹⁾	300	10	10	840	5.9	5.9	527.2	5906675064666
R-KEM-II-175-S ¹⁾	175	10	50	600	6.0	30.0	390.0	5906675064635
R-KEM-II-300-S ¹⁾	300	10	50	600	6.0	30.0	390.0	5906675064642
R-KEM-II-175-SET ¹⁾	175	5	5	525	3.0	3.0	348.3	5906675057866
R-KEM-II-300-SET ¹⁾	300	5	5	320	4.9	4.9	345.9	5906675057859
R-KEM-II-300-STONE ¹⁾	300	10	50	600	6.0	30.0	390.0	5906675038124
R-KEM-II-410-STONE ¹⁾	410	10	10	560	8.4	8.4	498.7	5906675424958
R-KEM-II-300-GREY ¹⁾	300	10	50	600	6.0	30.0	390.0	5906675038131
R-KEM-II-410-GREY ¹⁾	410	10	10	560	8.4	8.4	498.7	5906675424941

1) ETA-12/0394